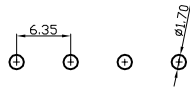
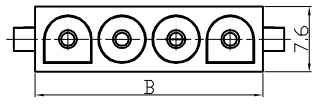
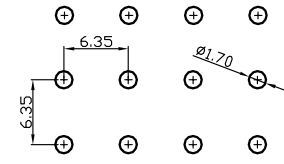
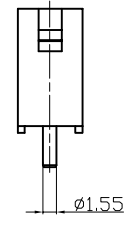
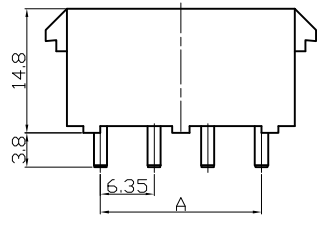


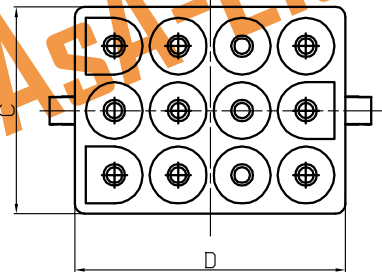
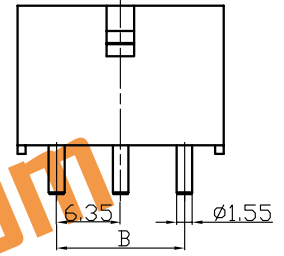
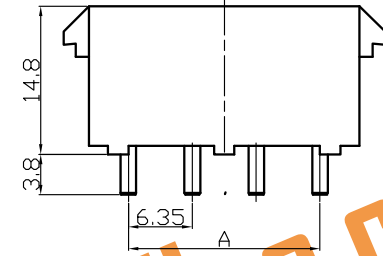
63080 Type Housing



PCB Layout



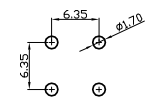
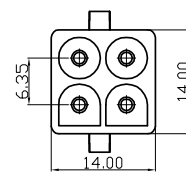
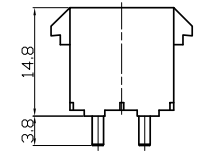
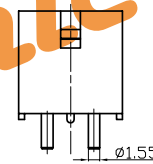
PCB Layout



Poles	Part No.		Dimensions	
			A	B
2	WW6351-PT02	63080-2A2	6.35	14
3	WW6351-PT03	63080-3A2	12.7	20.35
4	WW6351-PT04	63080-4A2	19.05	26.7
5	WW6351-PT05	63080-5A2	25.4	33.05

Poles	Part No.		Dimensions			
			A	B	C	D
6	WW6351-PT02x3	63080-3x2A2	6.35	12.7	20.3	14
9	WW6351-PT03x3	63080-3x3A2	12.7	12.7	20.3	20.3
12	WW6351-PT04x3	63080-3x4A2	19.05	12.7	20.3	26.7
15	WW6351-PT05x3	63080-3x5A2	25.4	12.7	20.3	33

**Model** 63080-A  
**Poles** 2 ~ 6 / 2 x 2 / 2 x 3 ~ 5 x 3 P  
**Rated voltage** 300 V AC/DC  
**Rated current** 11 ~ 13.5 A  
**Applicable wire** AWG #24 ~ #20  
**Contact resistance** ≤ 20 mΩ  
**Insulation resistance** ≥ 1000 MΩ  
**Withstand voltage** 1000 V AC/min  
**Temperature range** -25 °C ~ 85 °C



PCB Layout

63080-2x2A2-96



**AsA Electronic Co.**  
 Tel : (+98) 21 66 73 56 82 Mob : (+98) 912 03 161 02

Housing	PA66(UL94V-0/V-2)	1	White	
No.	Item/Material No.	Material	QTY	Remark
Unmarked Tolerance				
Unit		Scale	Design Unit	Size
mm		—	Metric	A4
Draw	Review	Approve	Material	Drawing No.
			Item	63080-NA